

GlobalEPD

A VERIFIED ENVIRONMENTAL DECLARATION



Environmental
Product
Declaration

EN ISO 14025:2006

EN 15804: 2012+A2:2019

EN 17160:2019

AENOR

VITACER CERÁMICAS SL Ceramic Tiles. Porcelain stoneware tiles (Bla)

Publication date: 29-01-2024

Valid until: 28-01-2029

The stated validity is subject to the continued registration and publication at www.aenor.com

Registration code: GlobalEPD EN 17160 - 022

VITACER



The owner of this Declaration is responsible for its content, as well as for keeping the supporting documentation that justifies the data and statements included during the period of validity.



Owner of the Declaration

VITACER CERAMICAS S.L.

Camino Viejo Vila-Real-Onda, nº 30
12540 Vila-Real (Castellón), Spain

Tel. +34 964 915 151
Mail info@vitacer.es
Web <https://vitacer.es/>

LCA study



**Instituto de Tecnología
Cerámica – (ITC-AICE)**
Campus Universitario Riu Sec
Av. Vicent Sos Baynat s/n
12006, Castellón, Spain

Tel. (+34) 964 34 24 24
Mail sostenibilidad@itc.uji.es
Web www.itc.uji.es

GlobalEPD Programme Manager



AENOR CONFÍA, S.A.U.
C/ Génova 6
28009 – Madrid
Spain

Tel. (+34) 902 102 201
Mail aenordap@aenor.com
Web www.aenor.com

AENOR is a founding member of ECO Platform, the European Association of Environmental Product Declaration Verification Programmes.

<p align="center">UNE-EN 17160: 2019</p> <p align="center">The European Standard EN 15804:2012+A2:2020 serves as the basis for CPR.</p>	
<p align="center">Independent verification of the declaration and data, in accordance with the Standard ISO 14025:2006</p> <p align="center"> <input type="checkbox"/> Internal <input checked="" type="checkbox"/> External </p>	
<p align="center">Verification Body</p> <p align="center">AENOR</p> <p align="center">The Certification Body is accredited by ENAC. 1/C-PR468</p>	

1. General Information

1.1. Description of the organisation

VITACER is a new brand name specializing in the manufacture and sale of ceramic wall and floor tiles. It was created with a view to developing a solid ever-increasing range of cutting-edge products, while also guaranteeing unbeatable quality and service.

To achieve this goal, strong investment was made into technology in search of new ingenious, more productive work processes. A foothold was also gained in various markets worldwide.

In keeping with its bid to launch innovative top-quality products and systems, VITACER has pioneered the sale of 20mm-thick outdoor ceramic tiles with a safe non-slip grip, high bending strength and high breaking load, in addition to its Smooth&Grip porcelain tiles, which combine a smooth feel with a non-slip grip.

At its Vila-real head office in Castellón, VITACER manufactures and distributes different types of porcelain tiles and white-body wall tiles in varying formats and finishes. Thanks to its top-quality service and wide choice of products, the brand name is all set to forge a leading reputation in the world ceramic tile sector.

MISSION

To offer consumers ceramic tiles with high-tech properties and a strong visual appeal, generating long-lasting synergies. Our customers are our priority, and so innovating and boosting our customers' confidence in VITACER are all important factors in our day-to-day work

VISION

To be a world leader in the manufacture and supply of ground-breaking ceramic tile products and related building systems so as to contribute to the creation of safe,

sustainable, eye-catching design projects.

VALUES

Quality, service, innovation, reliability, efficiency.

1.2. Scope of the Declaration

This Environmental Product Declaration includes environmental information for a group of products manufactured in two VITACER production centres in a geographical and technological environment in Spain 2022.

The location of these production centres is shown below:

Azulmed, S.L.U. C/ El Pinet, 1, 12592 Chilches, Castellón, Spain
Cerámicas Tesany S.L.U. C/ Ferrocarril, 4, 12593 Moncofa, Castellón, Spain

The results shown the environmental performance of the porcelain stoneware tiles (group Bla), as average weighted by production. Moreover, the environmental data of the tiles with the lowest and highest impact, thus narrowing down the results obtained in the LCA are also declared. The scope of this Environmental Product Declaration (hereinafter EPD) is from cradle to grave.

1.3. Life cycle and compliance

This EPD has been developed and verified in accordance with EN ISO 14025:2006 and EN 15804:2012+A2:2019 the following Category Rule:

INFORMATION ABOUT PRODUCT CATEGORY RULES	
Descriptive title	Product Category Rules for Ceramic Tiles
Registration code and version	EN 17160:2019
Publication date	2019
Compliance	EN 15804:2012+A2:2019

This Environmental Statement includes the following life cycle stages:

Limits of the system. Information modules considered

Product Stage	A1	Raw materials supply	X
	A2	Transport	X
	A3	Manufacturing	X
Construction	A4	Transport of the product	X
	A5	Installation and construction processes	X
Use	B1	Use	X
	B2	Maintenance	X
	B3	Repair	X
	B4	Replacement	X
	B5	Refurbishment	X
	B6	Use of energy in service	X
	B7	Use of water in service	X
End of Life	C1	Deconstruction	X
	C2	Transport	X
	C3	Waste management	X
	C4	Waste disposal	X
	D	Potential for reuse, recovery and recycling of materials	X
X = Module included in the LCA			

This EPD may not be comparable with those developed in other Programmes or according to different reference documents, in particular it may not be comparable with EPDs not developed according to EN 15804+A2.

Similarly, this EPD may not be comparable if the origin of the data is different (e.g. databases), not all relevant information modules are included or they are not based on the same scenarios.

The comparison of construction products should be done on the same function, applying the same functional unit and at the level of the building (or architectural or engineering work), i.e. including the behaviour of the product throughout its life cycle, as well as the specifications of section 6.7.2 of the ISO 14025 standard.

2. Product information

2.1. Product identification

The ceramic tiles included in this study belong to group Bla (porcelain stoneware tiles), a classification based on standard EN 14411:2016 (equivalent to standard ISO 13006:2018), i.e. they have a water absorption of less than 0.5% and are formed by pressing. Its common name is Porcelain Stoneware Tile.

The porcelain stoneware tiles included in this study include 30 commercial formats, all of them are glazed and some of them are treated mechanically. Their thicknesses range from 8.4 mm to 20 mm, with an average weight of 23 kg/m².

In the annexes, the results of the formats included in the scope of this EPD with the minimum and maximum environmental impact can be found, corresponding to the formats: 30x60cm of 18.5 kg/m² and 60x90 cm of 42.4 kg/m² fired weight respectively.

The CPC code of the product is 37370.

2.2. Product technical features

The manufacturer declares the following information on the technical specifications of the product:

Product technical features		
Technical properties	Standard	Requirements
Width	ISO 10545-2	Parameters within standard
Length		Parameters within standard
Thickness		Parameters within standard
Straightness of Sides		Parameters within standard
Rectangularity		Parameters within standard
Edge Curvature		Parameters within standard
Warpage		Parameters within standard

Modulus of Rupture	ISO 10545-4	Parameters within standard
Breaking Strength	ISO 10545-4	Parameters within standard
Surface Abrasion (Glazed)	ISO 10545-7	Parameters within standard
Thermal Expansion	ISO 10545-8	Parameters within standard
Thermal Shock	ISO 10545-9	Parameters within standard
Moisture Expansion	ISO 10545-10	Parameters within standard
Crazing Resistance	ISO 10545-11	Parameters within standard
Frost Resistance	ISO 10545-12	Parameters within standard
Resistance to Chemicals	ISO 10545-13	Parameters within standard
Stain Resistance	ISO 10545-14	Parameters within standard

This EPD contemplates residential interior floor coverings as a study scenario, however, the versatility of these ceramic tiles allows their installation in other places such as walls, roofs, façades, exterior flooring and in other types of buildings with different pedestrian traffic intensities, such as hospitals, schools, offices or shopping centres.

2.3. Product composition

The composition declared by the manufacturer is as follows:

Product composition	
Substance/Component	Content
Support (clays, feldspars, sands, etc.)	97%
Decoration raw materials (quartz, clays, feldspars, etc.)	3%

Substances contained in the product that are listed in the "Candidate List of Substances of Very High Concern (SVHC) for authorisation" do not exceed 0.1% by weight of the product.

3. LCA information

3.1. Life Cycle Assessment

The LCA has been carried out with the support of the LCA for Experts software (Sphera-GaBi) [7] and with the database version 2023.2 (SP40.0) [8]) (SpheraSolutions). The characterisation factors used are those included in the EN 15804:2012+A2:2019 standard.

3.2. Functional unit / declared unit

The functional unit considered is *"Covering 1 m² of the interior floor of a dwelling with ceramic tiles of group Bla, 23 kg/m², for 50 years"*.

3.3. Reference service life (RSL)

The reference useful life of the product is the same as that of the building where it is installed, provided it is installed correctly, as it is a long-lasting product that does not require replacement. A useful life of 50 years has been considered.

Reference service life

Parameter	Unit (expressed per functional unit or per declared unit)
Reference service life	Minimum 50 years
Declared product properties (on gate), coatings, etc.	Minimum values of the relevant characteristics according to Annex G of the EN 14411. For more information request technical data sheets according to model.
Design parameters of the application (manufacturer's instructions), including references to good practices	For more information request technical data sheets according to model.
Estimated quality of work, when installed according to the manufacturer's specifications	For more information request technical data sheets according to model.

Parameter	Unit (expressed per functional unit or per declared unit)
Installed from outside environment (for outdoor applications), e.g. weathering, pollutants, UV radiation and wind exposure, building orientation, shading, temperature, etc.	Results of the values of the relevant characteristics according to Annex G of the EN 14411. For more information request technical data sheets according to model.
Indoor environment (for indoor applications), e.g. temperature, humidity, chemical exposure	Results of the values of the relevant characteristics according to Annex G of the EN 14411. For more information request technical data sheets according to model.
Conditions of use, e.g.: frequency of use, mechanical exposure, etc.	For more information request technical data sheets according to model.
Maintenance, e.g.: required frequency, type and quality and replacement of replaceable components	For more information request technical data sheets according to model.

3.4. Allocation rules

In accordance with the standards and PCR, the principle of causality has been applied when assigning inputs and outputs in processes with multiple inputs and/or outputs. Therefore, an attempt has been made to establish the physical relationship between the inputs and outputs of the system and its different products.

Generally speaking, in the allocation of inputs and outputs to the declared unit, production-weighted averages have been carried out.

3.5. Cut-off rule and exclusions

In this cradle-to-grave LCA study, a cut-off rule of 1% for the energy use (renewable and non - renewable) and 1% of total mass in those unitary processes, whose data is insufficient, have been applied. In total, more than 95% of all mass and energy inputs and outputs of the system have been included, excluding the not available nor quantified data.

The excluded data are the following:

- Diffuse particle emissions to the atmosphere
- Atmospheric emissions of pollutants, non-regulated
- Long-term emissions (>100 years)
- The production of some auxiliary materials used in the production of tiles representing less than 0.01% by total mass.
- Machinery and industrial equipment production.

3.6. Representativeness, quality and selection of data

The primary data have been provided directly by the company VITACER, with two production centres located in Chilches and Moncofa (Castellón), Spain. For the secondary data, the most updated Sphera-GaBi databases [8] have been used and modelled with the version of LCA for Experts (Sphera-GaBi) [7]. All data belong to a geographical scenario of Spain 2022.

The results presented are representative of ceramic tiles, expressed as an average weighted by the production of the ceramic tiles belonging to the Bla group range, limiting this average by the products with the minimum and maximum environmental impact.

3.7. Other calculation rules and assumptions

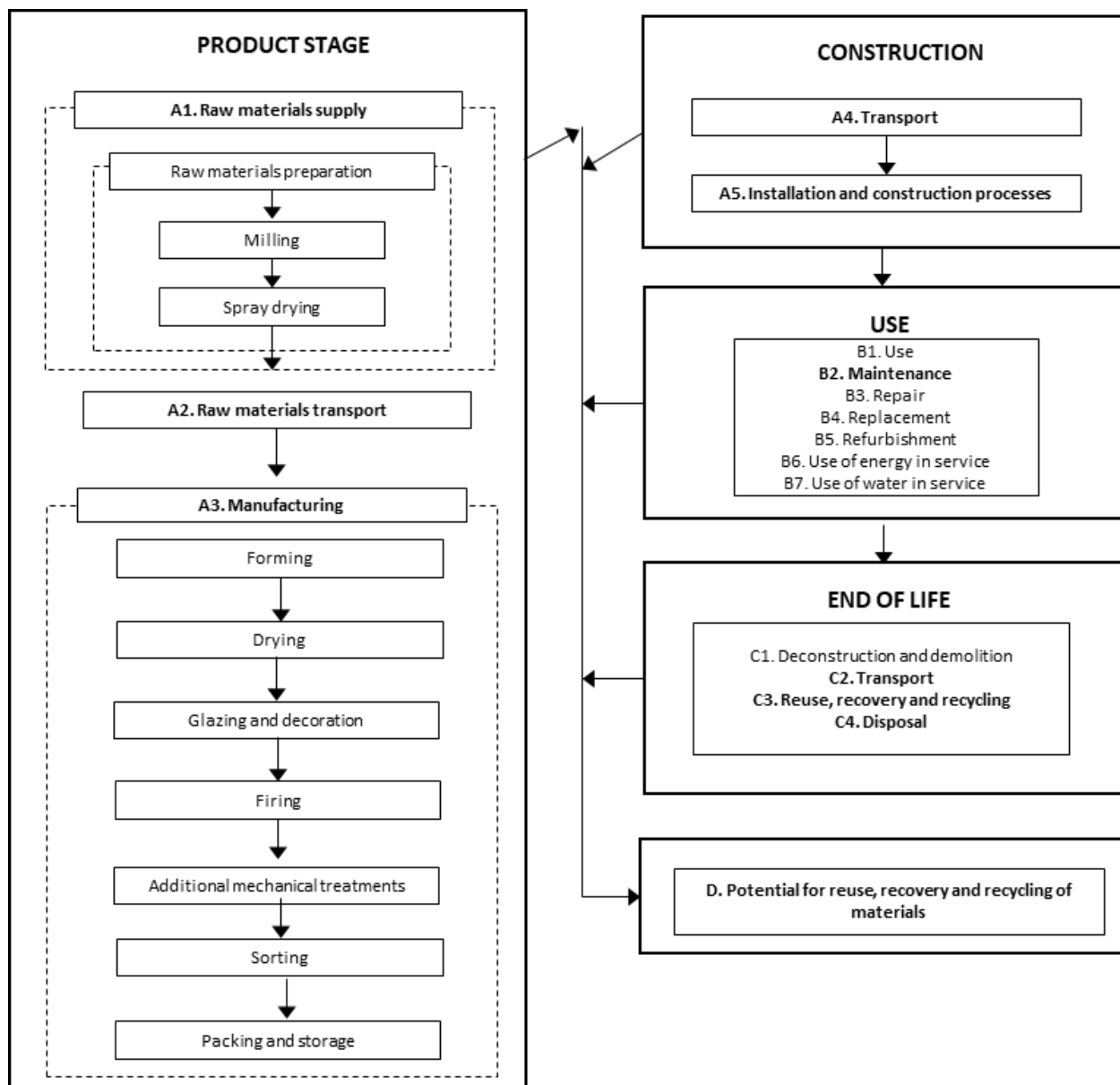
The 32 tile references have different weights and environmental impacts. The following table shows the deviations of the format with the highest and lowest environmental impact with respect to the average, in relation to the product stage (A1-A3). Annex I and Annex II show the environmental impact results of the reference with minimum and maximum impact values respectively.

Impact Indicator	Relative variation from the average
GWP-total	-23%/+69%
AP	-19%/+59%
POCP	-20%/+60%

4. System limits, scenarios and additional technical information.

All life cycle modules relevant to ceramic tiles according to the PCR have been included:

System diagram



4.1. Pre-manufacturing processes (upstream).

Raw materials (A1) and Transport (A2)

Ceramic tiles are composed of a ceramic support and a decorative layer.

The raw materials included in the composition of the support are mainly clays, feldspars, sands and ceramic waste generated during the manufacture.

The raw materials for decoration (glazes, engobes and inks) are produced in specialised plants. The most common raw materials are ceramic frits, pigments and inorganic materials. Ceramic frits are insoluble glasses, prepared in advance by complete melting of their original raw materials and fast cooling.

The raw materials used have different origins, according to their nature and properties; they are transported by road or by ship in bulk, depending on the distance and location of the extraction point.

4.2. Manufacturing of the product

Manufacturing (A3)

The preparation of raw materials for the ceramic body starts with a mixture preparation, wet milling and subsequent spray drying to obtain granules.

This granule is sent to the forming stage by uniaxial dry pressing and later, they are placed in a continuous dryer to reduce their humidity

The tiles coming from the dryer are covered with one or more thin layers of engobe and glaze, and in some cases, it is mostly decorated by inkjet printing.

Then, the ceramic pieces are subject to a single firing single-deck roller kiln. This treatment is used to confer the product surface a series of technique and aesthetic features, as impermeability, ease of cleaning, brightness, colour, superficial texture, chemical and mechanical resistance.

In some cases, mechanical treatments such as cutting and grinding are applied to provide new effects. Once the quality

controls are met, the classified pieces are packaged in primary cardboard packs and wood pallets. Finally, they are covered with film LDPE.

4.3. Construction process

Transport (A4)

The product is distributed 22% in Spain, 27% in Europe and 48% in the rest of the world.

Module A4 Transport to site

Parameter	Result (expressed per functional unit)
Type and fuel consumption of the vehicle, type of vehicles used for transport, e.g. long distance trucks, ship, etc..	According to the destinations in the distribution as described above: 0.1671 l diesel (Euro truck 6, 27 t) 0.0377 l fuel oil (ship)
Distance	300 km national distribution: 22% 1390 km rest of Europe distribution: 27% 6520 km rest of the world distribution: 48%
Capacity utilisation (including no-load return)	85% in truck 100% ship
Bulk density of transported products	≈1800 kg/m ³
Usable capacity factor (factor: = 1 or < 1 or ≥ 1 for products that are packed compressed or nested)	Not applicable

Product installation and construction process (A5).

Once the product is unpacked, it is installed. According to the PCRs for ceramic tiles, it has been established that the application of mortar is required for installation.

The waste derived from the packaging of the pieces is managed separately according to the geographical location of the installation site. Otherwise, 3% of product losses have been considered at the installation stage.

Module A5 - Installation

Parameter	Result (expressed per functional unit)
Supplementary materials for installation	3.3 kg
Water use	0.8 l
Use of other resources	Not applicable
Quantitative description of the type of energy (regional mix) and consumption during the installation process	Not applicable
Waste of materials at the construction site before processing of waste generated at the product installation (specified by type)	Product losses: 690g Packaging wastes: Cardboard: 142 g Plastic: 24g Wood: 452 g
Output of materials (specified by type) as a result of waste treatment waste at the construction site, e.g. from waste collected for recycling, energy recovery, disposal (specified by route)	Product losses for recycling: 484g Product losses for final deposition: 207g Incinerated cardboard: 1g Recycled cardboard: 141g Cardboard for final deposition: 0 g Incinerated plastic: 2g Recycled plastic: 19g Plastic for final deposition: 3g Incinerated wood: 98g Recycled wood: 343g Wood for final deposition: 11g
Direct emissions to ambient air, soil and water	Not applicable

4.4. Use Stage**B1 Use**

Once it had been installed, the product needed neither water nor energy input for use and do not emissions into the environment. At this stage, there are no processes that generate environmental impacts. For this reason, only the environmental burdens attributable to the maintenance of the product (module B2) are considered.

B2 Maintenance

It can be done with a damp cloth and, if the surface is dirty or greasy, cleaning agents such as detergents or bleaches can be used.

Use linked to the building structure

Parameter	Result (expressed per functional unit)
B2 Maintenance	
Maintenance process	According to RCP for ceramic tiles (EN17160) residential floor and wall cleaning scenario
Maintenance cycle	Washing once a week with water and once every two weeks with detergent.
Auxiliary materials for maintenance (e.g. cleaning products) (specify each material)	Detergent: 1.34E-04 kg/m ²
Material wastage during maintenance (specify type))	Not applicable
Net tap water consumption	0.1 l/m ²
Energy input during maintenance (e.g. vacuum cleaning), type of energy carrier (e.g. electricity) and amount, if applicable and relevant	Not applicable

B3-B4-B5 Repair, replacement and refurbishment

The tiles do not require repair, replacement or renovation if the tiles are correctly installed.

4.5. Use linked to the operation of the building**B6-B7 Operational energy use and Operational water use**

These modules are not relevant for ceramic tiles.

4.6. End of Life Stage**C1 Deconstruction and demolition**

At the end of its service life, the product will be removed, either as part of a building renovation or during demolition. In the context of the demolition of a building, the impacts attributable to the removal of the product are negligible.

C2 Transport

The product waste is transported in a truck to be managed either by deposition in inert landfills or recycling.

C3 Waste management for reuse, recovery and recycling

70% of tiles are considered to be recycled and/or reused, as indicated in the PCR.

C4 Final disposal

It was assumed that 30% of the product was sent to controlled landfills after its service life had ended.

End of life

Parameter	Result (expressed per functional unit)
Collection process, specified by type	26.3 kg total
Recovery system, specified by type	18.4 kg for recycling
Disposal, specified by type	7.9 kg to landfill
Assumptions for scenario development (e.g.: transport)	The product waste is transported in a Euro 6 compliant heavy-duty truck (27 t) to be managed either to landfilling or recycling. An average distance of 50km from the building site to the final destination is considered. The return journey of the lorries is also included (100% empty return).

4.7. Benefits and burdens beyond the system

Module D

The net environmental burdens and net benefits of obtaining the secondary material from waste at the installation stage and at the end of life of the product have been considered.

4.8. Information on biogenic carbon content

The carbon content of both the product and its packaging was separately declared. In the case of the product at issue, ceramic tiles, the tile components were inorganic, so that the biogenic carbon calculation did not apply.

In regard to the packaging used for tile distribution, its mass was less than 5% of the total product mass, so that the declaration of packaging biogenic carbon content was omitted.

5. Environmental Information.

Environmental impacts.

The estimated impact results are relative and do not indicate the final value of the impact categories, nor do they refer to threshold values, safety margins or risks.

Indicator	Unit	A1-A3	A4	A5	B1	B2	B3	B4	B5	B6	B7	C1	C2	C3	C4	D
GWP-fossil	kg CO ₂ eq	11.4	6.4E-01	1.5	0	3.1E-01	0	0	0	0	0	0	2.1E-01	0	1.3E-01	-2.2E-01
GWP-biogenic	kg CO ₂ eq	6.0E-02	-6.6E-03	-2.0E-04	0	2.8E-03	0	0	0	0	0	0	-2.8E-03	0	1.3E-03	-1.2E-04
GWP-luluc	kg CO ₂ eq	9.0E-03	4.5E-03	1.1E-03	0	2.4E-05	0	0	0	0	0	0	1.9E-03	0	5.6E-04	-6.5E-04
GWP-total	kg CO ₂ eq	11.5	6.4E-01	1.5	0	3.1E-01	0	0	0	0	0	0	2.1E-01	0	1.3E-01	-2.2E-01
ODP	kg CFC11 eq	3.6E-08	7.3E-14	1.1E-09	0	1.4E-07	0	0	0	0	0	0	2.6E-14	0	7.4E-14	-6.0E-09
AP	mol H ⁺ eq	3.2E-02	5.1E-03	3.3E-03	0	3.2E-03	0	0	0	0	0	0	2.2E-04	0	9.5E-04	-6.9E-04
EP-freshwater	kg PO ₄ eq	4.0E-04	5.6E-06	1.8E-05	0	2.5E-05	0	0	0	0	0	0	2.3E-06	0	8.4E-06	-6.7E-06
EP-marine	kg N eq	9.6E-03	1.3E-03	1.1E-03	0	3.6E-04	0	0	0	0	0	0	6.8E-05	0	2.6E-04	-2.4E-04
EP-terrestrial	mol N eq	1.1E-01	1.4E-02	1.2E-02	0	1.3E-02	0	0	0	0	0	0	8.2E-04	0	2.8E-03	-2.6E-03
POCP	Kg NMVOC eq	2.8E-02	3.7E-03	3.1E-03	0	2.4E-03	0	0	0	0	0	0	2.1E-04	0	7.6E-04	-6.5E-04
ADP-minerals& metals ²	kg Sb eq	7.5E-06	3.4E-08	2.5E-07	0	2.1E-08	0	0	0	0	0	0	1.4E-08	0	1.3E-08	-9.6E-08
ADP-fossil ²	MJ	182.0	8.3	11.4	0	2.0	0	0	0	0	0	0	2.8	0	1.7E+00	-3.2
WDP ²	m ³	1.3	6.1E-03	1.6E-01	0	21.0	0	0	0	0	0	0	2.5E-03	0	9.8E-03	1.4E-03

GWP-fossil = Global Warming Potential fossil fuels; GWP-biogenic = Global Warming Potential biogenic; GWP-luluc = Global Warming Potential land use and land use change; ODP = Depletion potential of the stratospheric ozone layer; AP = Acidification potential. Accumulated Exceedance; EP-freshwater = Eutrophication potential. Fraction of nutrients reaching freshwater end compartment; EP-marine = Eutrophication potential. Fraction of nutrients reaching marine end compartment; EP-terrestrial = Eutrophication potential. Accumulated Exceedance; POCP = Formation potential of tropospheric ozone; ADP-minerals&metals = Abiotic depletion potential for non-fossil resources; ADP-fossil = Abiotic depletion for fossil resources potential; WDP = Water (user) deprivation potential. deprivation-weighted water consumption

Additional environmental impacts

Indicator	Unit	A1-A3	A4	A5	B1	B2	B3	B4	B5	B6	B7	C1	C2	C3	C4	D
PM	Incidence of diseases	2.5E-05	8.7E-08	7.7E-07	0	2.1E-08	0	0	0	0	0	0	1.6E-09	0	1.2E-08	-3.2E-09
IRP ¹	kBq U235 eq	35.7	5.9	3.9	0	9.6E-01	0	0	0	0	0	0	2.0	0	1.0	-1.3
ETP-fw ²	CTUe	3.6E-09	1.2E-10	2.5E-10	0	1.1E-10	0	0	0	0	0	0	4.0E-11	0	1.3E-10	3.8E-12
HTP-c ²	CTUh	4.7E-08	5.0E-09	1.2E-08	0	1.3E-08	0	0	0	0	0	0	1.8E-09	0	1.4E-08	-1.2E-09
HTP-nc ²	CTUh	2.3E-01	2.1E-03	4.3E-02	0	2.6E-03	0	0	0	0	0	0	7.7E-04	0	2.3E-03	-1.2E-02
SQP ²	-	137.0	2.8	13.2	0	347.0	0	0	0	0	0	0	1.2E+00	0	4.0E-01	-1.9

PM: Potential for disease incidence due to emissions of particulate matter (PM); IRP : Exposure efficiency of human potential relative to U235; ETP-fw : Ecosystem toxic unit comparative potential - freshwater; HTP-c : Ecosystem toxic unit comparative potential - carcinogenic effects; HTP-nc : Ecosystem toxic unit comparative potential - non-carcinogenic effects; SQP : Soil quality potential index; NR: Not relevant

Note 1: This impact category deals mainly with potential impacts of low doses of ionising radiation on human health from the nuclear fuel cycle. It does not consider effects due to possible nuclear accidents or occupational exposure due to disposal of radioactive waste in underground facilities. Ionising radiation potential of soil, due to radon or some building materials is also not measured by this parameter.

Note 2: The results of this environmental impact indicator should be used with caution, as the uncertainties of the results are high and experience with this parameter is limited.

Use of resources

Indicator	Unit	A1-A3	A4	A5	B1	B2	B3	B4	B5	B6	B7	C1	C2	C3	C4	D
PERE	MJ	31.8	4.9E-01	2.7	0	7.1	0	0	0	0	0	0	2.0E-01	0	2.0E-01	-6.0
PERM	MJ	0	0	0	0	0	0	0	0	0	0	0	0	0	0	0
PERT	MJ	31.8	4.9E-01	2.7	0	7.1	0	0	0	0	0	0	2.0E-01	0	2.0E-01	-6.0
PENRE	MJ	183.0	8.4	11.5	0	2.0	0	0	0	0	0	0	2.8	0	1.7	-3.2
PENRM	MJ	0	0	0	0	0	0	0	0	0	0	0	0	0	0	0
PENRT	MJ	183.0	8.4	11.5	0	2.0	0	0	0	0	0	0	2.8	0	1.7	-3.2
SM	kg	0	0	0	0	0	0	0	0	0	0	0	0	0	0	0
RSF	MJ	0	0	0	0	0	0	0	0	0	0	0	0	0	0	0
NRSF	MJ	0	0	0	0	0	0	0	0	0	0	0	0	0	0	0
FW	m ³	2.6E-02	5.4E-04	3.3E-03	0	2.7E-01	0	0	0	0	0	0	2.2E-04	0	3.3E-04	-2.1E-03

PERE = Use of renewable primary energy excluding renewable primary energy resources used as raw materials; PERM = Use of renewable primary energy resources used as raw materials; PERT = Total use of renewable primary energy resources; PENRE = Use of non-renewable primary energy excluding non-renewable primary energy resources used as raw materials; PENRM = Use of non-renewable primary energy resources used as raw materials; PENRT = Total use of non-renewable primary energy re-sources; SM = Use of secondary material; RSF = Use of renewable secondary fuels; NRSF = Use of non-renewable secondary fuels; FW = Use of net fresh water

Waste categories

Indicator	Unit	A1-A3	A4	A5	B1	B2	B3	B4	B5	B6	B7	C1	C2	C3	C4	D
HWD	kg	2.4E-03	2.6E-11	7.2E-05	0	9.8E-12	0	0	0	0	0	0	8.6E-12	0	2.7E-08	-4.1E-08
NHWD	kg	2.5	1.2E-03	4.1E-01	0	7.7E-02	0	0	0	0	0	0	4.2E-04	0	8.0	-1.1E-03
RWD	kg	2.1E-03	1.5E-05	2.9E-04	0	2.4E-05	0	0	0	0	0	0	5.2E-06	0	2.4E-05	-3.4E-05

HWD: Hazardous waste disposed of; NHWD: Non-hazardous waste disposed of; RWD: Radioactive waste disposed of; NR: Not relevant

Output flows

Indicator	Unit	A1-A3	A4	A5	B1	B2	B3	B4	B5	B6	B7	C1	C2	C3	C4	D
CRU	kg	0	0	0	0	0	0	0	0	0	0	0	0	0	0	0
MFR	kg	2.4E-02	0	9.7E-01	0	0	0	0	0	0	0	0	0	18.4	0	0
MER	kg	0	0	0	0	0	0	0	0	0	0	0	0	0	0	0
EE	MJ	0	0	0	0	0	0	0	0	0	0	0	0	0	0	0

CRU: Components for reuse; MFR: Materials for recycling; MER: Materials for energy recovery; EE: Energy exported; NR: Not relevant.

6. Additional environmental impacts

Indoor air emissions

Ceramic tiles, in their manufacturing process, are subjected to a thermal process that exceeds 1000°C. At these temperatures, any organic compounds present in the compositions decompose, resulting in a final product that is inert and free of volatile organic compounds that may be emitted during the use phase.

Release to soil and water

Ceramic tiles do not emit any compounds into the soil or water during the use phase, as it is a totally inert product, which does not undergo physical, chemical or biological transformations, is not soluble or combustible, does not react physically, chemically or in any other way, is not biodegradable, does not adversely affect other materials with which it comes into contact in a way that could lead to environmental pollution or harm human health. It is a non-leaching product and therefore does not pose a risk to surface or groundwater quality.

Contribution to the Global Warming Potential category (Total GWP)

On average, Bla Group tiles contribute 0.5 kg of CO₂ equivalent per kg of product (GWP-Total).

Environmental information about the company

In March 2022, the new PV AUTOCONSUMO CENUSA photovoltaic solar plant came into operation, installed on various roofs of the industrial warehouses that the company has at its facilities in Nules (Castellón) with a peak installed power of 2,785.96 kWp and a power inverter

rating of 2,500 kW.

This evolution has been possible thanks to sustained growth that has allowed investments to improve and modernize industrial plants. This allows VITACER to be a leader in competitiveness and manufacturing capacity for all types of ceramic products in any of the formats available on the market, combining the highest quality and the best designs.

The installation has had a cost of 1,540,638.65 +VAT and has received a subsidy of €180,948.42 granted through the IVACE (Valencian Institute of Business Competitiveness), the Ministry for the Ecological Transition and the Demographic Challenge, and the IDAE (Institute for Energy Diversification and Saving), being financed by the Next Generation Funds of the European Union.

The solar plant consists of 6,123 photovoltaic panels and 25 inverters, which in turn makes it possible to monitor the production of the plant and the consumption of the network.

In this way, VITACER joins the strategy of energy independence and the use of renewable energies, which in the current circumstances appears as a basic necessity, both for reducing environmental impact and for energy savings.

In addition, VITACER has several certificates in each of its plants:

AZULMED

ISO 9001: Certificate: 34/5200/15/0671

ISO 50001: Certificate: GE-2023/0077

TESANY

ISO 9001: Certificate: 34/5200/21/5176

According to ISO 17889-1 the pre-consumer recycled content is 11.6%.

Annex I. Declaration of the environmental parameters of the LCA and LCI for the format with minimum impacts

Environmental impacts

The estimated impact results are relative and do not indicate the final value of the impact categories, nor do they refer to threshold values, safety margins or risks.

Indicator	Unit	A1-A3	A4	A5	B1	B2	B3	B4	B5	B6	B7	C1	C2	C3	C4	D
GWP-fossil	kg CO ₂ eq	8.8	4.9E-01	1.2	0	2.4E-01	0	0	0	0	0	0	1.6E-01	0	9.8E-02	-1.7E-01
GWP-biogenic	kg CO ₂ eq	4.6E-02	-5.0E-03	-1.6E-04	0	2.2E-03	0	0	0	0	0	0	-2.1E-03	0	1.0E-03	-9.1E-05
GWP-luluc	kg CO ₂ eq	7.0E-03	3.5E-03	8.6E-04	0	1.8E-05	0	0	0	0	0	0	1.4E-03	0	4.3E-04	-5.0E-04
GWP-total	kg CO ₂ eq	8.9	4.9E-01	1.2	0	2.4E-01	0	0	0	0	0	0	1.6E-01	0	9.9E-02	-1.7E-01
ODP	kg CFC11 eq	2.7E-08	5.6E-14	8.2E-10	0	1.0E-07	0	0	0	0	0	0	2.0E-14	0	5.7E-14	-4.6E-09
AP	mol H ⁺ eq	2.5E-02	3.9E-03	2.5E-03	0	2.5E-03	0	0	0	0	0	0	1.7E-04	0	7.3E-04	-5.3E-04
EP-freshwater	kg PO ₄ eq	3.1E-04	4.3E-06	1.3E-05	0	1.9E-05	0	0	0	0	0	0	1.7E-06	0	6.4E-06	-5.1E-06
EP-marine	kg N eq	7.7E-03	9.8E-04	8.5E-04	0	2.7E-04	0	0	0	0	0	0	5.2E-05	0	2.0E-04	-1.9E-04
EP-terrestrial	mol N eq	8.6E-02	1.1E-02	9.3E-03	0	1.0E-02	0	0	0	0	0	0	6.3E-04	0	2.1E-03	-2.0E-03
POCP	Kg NMVOC eq	2.3E-02	2.8E-03	2.4E-03	0	1.8E-03	0	0	0	0	0	0	1.6E-04	0	5.9E-04	-5.0E-04
ADP-minerals&metals ²	kg Sb eq	5.8E-06	2.6E-08	1.9E-07	0	1.6E-08	0	0	0	0	0	0	1.0E-08	0	1.0E-08	-7.3E-08
ADP-fossil ²	MJ	141.0	6.4	8.8	0	1.5	0	0	0	0	0	0	2.1E+00	0	1.3E+00	-2.5
WDP ²	m ³	1.1	4.7E-03	1.3E-01	0	16.1	0	0	0	0	0	0	1.9E-03	0	7.5E-03	1.1E-03

GWP-fossil = Global Warming Potential fossil fuels; GWP-biogenic = Global Warming Potential biogenic; GWP-luluc = Global Warming Potential land use and land use change; ODP = Depletion potential of the stratospheric ozone layer; AP = Acidification potential. Accumulated Exceedance; EP-freshwater = Eutrophication potential. Fraction of nutrients reaching freshwater end compartment; EP-marine = Eutrophication potential. Fraction of nutrients reaching marine end compartment; EP-terrestrial = Eutrophication potential. Accumulated Exceedance; POCP = Formation potential of tropospheric ozone; ADP-minerals&metals = Abiotic depletion potential for non-fossil resources; ADP-fossil = Abiotic depletion for fossil resources potential; WDP = Water (user) deprivation potential. deprivation-weighted water consumption.

Additional environmental impacts

Indicator	Unit	A1-A3	A4	A5	B1	B2	B3	B4	B5	B6	B7	C1	C2	C3	C4	D
PM	Incidence of diseases	1.9E-05	6.7E-08	5.9E-07	0	1.6E-08	0	0	0	0	0	0	1.2E-09	0	8.9E-09	-2.5E-09
IRP ¹	kBq U235 eq	27.7	4.6	3.0	0	7.4E-01	0	0	0	0	0	0	1.5E+00	0	8.0E-01	-9.7E-01
ETP-fw ²	CTUe	2.8E-09	9.1E-11	2.0E-10	0	8.7E-11	0	0	0	0	0	0	3.1E-11	0	1.0E-10	2.9E-12
HTP-c ²	CTUh	3.7E-08	3.8E-09	9.4E-09	0	1.0E-08	0	0	0	0	0	0	1.4E-09	0	1.1E-08	-9.5E-10
HTP-nc ²	CTUh	2.0E-01	1.6E-03	3.3E-02	0	2.0E-03	0	0	0	0	0	0	5.9E-04	0	1.7E-03	-9.2E-03
SQP ²	-	106.0	2.1E+00	10.2	0	266.0	0	0	0	0	0	0	8.9E-01	0	3.1E-01	-1.5

PM: Potential for disease incidence due to emissions of particulate matter (PM); IRP : Exposure efficiency of human potential relative to U235; ETP-fw : Ecosystem toxic unit comparative potential - freshwater; HTP-c : Ecosystem toxic unit comparative potential - carcinogenic effects; HTP-nc : Ecosystem toxic unit comparative potential - non-carcinogenic effects; SQP : Soil quality potential index; NR: Not relevant

Note 1: This impact category deals mainly with potential impacts of low doses of ionising radiation on human health from the nuclear fuel cycle. It does not consider effects due to possible nuclear accidents or occupational exposure due to disposal of radioactive waste in underground facilities. Ionising radiation potential of soil, due to radon or some building materials is also not measured by this parameter.

Note 2: The results of this environmental impact indicator should be used with caution, as the uncertainties of the results are high and experience with this parameter is limited.

Use of resources

Indicator	Unit	A1-A3	A4	A5	B1	B2	B3	B4	B5	B6	B7	C1	C2	C3	C4	D
PERE	MJ	24.6	3.8E-01	2.1	0	5.5	0	0	0	0	0	0	1.5E-01	0	1.5E-01	-4.6E+00
PERM	MJ	0	0	0	0	0	0	0	0	0	0	0	0	0	0	0
PERT	MJ	24.6	3.8E-01	2.1	0	5.5	0	0	0	0	0	0	1.5E-01	0	1.5E-01	-4.6E+00
PENRE	MJ	142.0	6.4	8.9	0	1.5	0	0	0	0	0	0	2.1	0	1.3	-2.5
PENRM	MJ	0	0	0	0	0	0	0	0	0	0	0	0	0	0	0
PENRT	MJ	142.0	6.4	8.9	0	1.5	0	0	0	0	0	0	2.1	0	1.3	-2.5
SM	kg	0	0	0	0	0	0	0	0	0	0	0	0	0	0	0
RSF	MJ	0	0	0	0	0	0	0	0	0	0	0	0	0	0	0
NRSF	MJ	0	0	0	0	0	0	0	0	0	0	0	0	0	0	0
FW	m ³	2.2E-02	4.1E-04	2.6E-03	0	2.1E-01	0	0	0	0	0	0	1.7E-04	0	2.5E-04	-1.6E-03

PERE = Use of renewable primary energy excluding renewable primary energy resources used as raw materials; PERM = Use of renewable primary energy resources used as raw materials; PERT = Total use of renewable primary energy resources; PENRE = Use of non-renewable primary energy excluding non-renewable primary energy resources used as raw materials; PENRM = Use of non-renewable primary energy resources used as raw materials; PENRT = Total use of non-renewable primary energy re-sources; SM = Use of secondary material; RSF = Use of renewable secondary fuels; NRSF = Use of non-renewable secondary fuels; FW = Use of net fresh water.

Waste categories

Indicator	Unit	A1-A3	A4	A5	B1	B2	B3	B4	B5	B6	B7	C1	C2	C3	C4	D
HWD	kg	1.9E-03	2.0E-11	5.7E-05	0	7.5E-12	0	0	0	0	0	0	6.6E-12	0	2.1E-08	-3.1E-08
NHWD	kg	1.9	9.0E-04	3.2E-01	0	5.9E-02	0	0	0	0	0	0	3.2E-04	0	6.1	-8.6E-04
RWD	kg	1.9E-03	1.1E-05	2.3E-04	0	1.8E-05	0	0	0	0	0	0	4.0E-06	0	1.8E-05	-2.6E-05

HWD: Hazardous waste disposed of; NHWD: Non-hazardous waste disposed of; RWD: Radioactive waste disposed of; NR: Not relevant

Output flows

Indicator	Unit	A1-A3	A4	A5	B1	B2	B3	B4	B5	B6	B7	C1	C2	C3	C4	D
CRU	kg	0	0	0	0	0	0	0	0	0	0	0	0	0	0	0
MFR	kg	1.8E-02	0	8.8E-01	0	0	0	0	0	0	0	0	0	15.3	0	0
MER	kg	0	0	0	0	0	0	0	0	0	0	0	0	0	0	0
EE	MJ	0	0	0	0	0	0	0	0	0	0	0	0	0	0	0

CRU: Components for reuse; MFR: Materials for recycling; MER: Materials for energy recovery; EE: Energy exported; NR: Not relevant.

Annex II. Declaration of the environmental parameters of the LCA and LCI for the format with maximum impacts

Environmental impacts

The estimated impact results are relative and do not indicate the final value of the impact categories, nor do they refer to threshold values, safety margins or risks.

Indicator	Unit	A1-A3	A4	A5	B1	B2	B3	B4	B5	B6	B7	C1	C2	C3	C4	D
GWP-fossil	kg CO ₂ eq	19.3	1.1	2.6	0	5.5E-01	0	0	0	0	0	0	3.7E-01	0	2.3E-01	-3.9E-01
GWP-biogenic	kg CO ₂ eq	8.7E-02	-1.2E-02	-1.0E-03	0	5.0E-03	0	0	0	0	0	0	-5.0E-03	0	2.4E-03	-2.1E-04
GWP-luluc	kg CO ₂ eq	1.5E-02	7.9E-03	2.0E-03	0	4.2E-05	0	0	0	0	0	0	3.3E-03	0	9.9E-04	-1.2E-03
GWP-total	kg CO ₂ eq	19.4	1.1	2.6	0	5.5E-01	0	0	0	0	0	0	3.7E-01	0	2.3E-01	-4.0E-01
ODP	kg CFC11 eq	5.2E-08	1.3E-13	1.6E-09	0	2.4E-07	0	0	0	0	0	0	4.7E-14	0	1.3E-13	-1.1E-08
AP	mol H ⁺ eq	5.1E-02	9.2E-03	5.6E-03	0	5.7E-03	0	0	0	0	0	0	3.9E-04	0	1.7E-03	-1.2E-03
EP-freshwater	kg PO ₄ eq	6.2E-04	9.7E-06	2.9E-05	0	4.4E-05	0	0	0	0	0	0	4.1E-06	0	1.5E-05	-1.2E-05
EP-marine	kg N eq	1.5E-02	2.3E-03	1.9E-03	0	6.3E-04	0	0	0	0	0	0	1.2E-04	0	4.7E-04	-4.3E-04
EP-terrestrial	mol N eq	1.7E-01	2.5E-02	2.1E-02	0	2.3E-02	0	0	0	0	0	0	1.5E-03	0	5.0E-03	-4.7E-03
POCP	Kg NMVOC eq	4.5E-02	6.6E-03	5.3E-03	0	4.2E-03	0	0	0	0	0	0	3.8E-04	0	1.4E-03	-1.2E-03
ADP-minerals& metals ²	kg Sb eq	1.1E-05	5.9E-08	3.7E-07	0	3.7E-08	0	0	0	0	0	0	2.4E-08	0	2.4E-08	-1.7E-07
ADP-fossil ²	MJ	306.0	14.6	19.8	0	3.5	0	0	0	0	0	0	4.9	0	3.1E+00	-5.7
WDP ²	m ³	1.7	1.1E-02	2.6E-01	0	37.2	0	0	0	0	0	0	4.4E-03	0	1.8E-02	3.1E-03

GWP-fossil = Global Warming Potential fossil fuels; GWP-biogenic = Global Warming Potential biogenic; GWP-luluc = Global Warming Potential land use and land use change; ODP = Depletion potential of the stratospheric ozone layer; AP = Acidification potential. Accumulated Exceedance; EP-freshwater = Eutrophication potential. Fraction of nutrients reaching freshwater end compartment; EP-marine = Eutrophication potential. Fraction of nutrients reaching marine end compartment; EP-terrestrial = Eutrophication potential. Accumulated Exceedance; POCP = Formation potential of tropospheric ozone; ADP-minerals&metals = Abiotic depletion potential for non-fossil resources; ADP-fossil = Abiotic depletion for fossil resources potential; WDP = Water (user) deprivation potential. deprivation-weighted water consumption.

Additional environmental impacts

Indicator	Unit	A1-A3	A4	A5	B1	B2	B3	B4	B5	B6	B7	C1	C2	C3	C4	D
PM	Incidence of diseases	4.4E-05	1.6E-07	1.4E-06	0	3.8E-08	0	0	0	0	0	0	2.8E-09	0	2.1E-08	-5.7E-09
IRP ¹	kBq U235 eq	59.7	10.4	6.8	0	1.7	0	0	0	0	0	0	3.5	0	1.8E+00	-2.3
ETP-fw ²	CTUe	5.6E-09	2.1E-10	4.3E-10	0	2.0E-10	0	0	0	0	0	0	7.1E-11	0	2.3E-10	6.7E-12
HTP-c ²	CTUh	7.8E-08	8.7E-09	2.2E-08	0	2.3E-08	0	0	0	0	0	0	3.2E-09	0	2.5E-08	-2.2E-09
HTP-nc ²	CTUh	3.2E-01	3.8E-03	7.3E-02	0	4.7E-03	0	0	0	0	0	0	1.4E-03	0	4.0E-03	-2.1E-02
SQP ²	-	201.0	4.9	22.2	0	616.0	0	0	0	0	0	0	2.1	0	7.2E-01	-3.4

PM: Potential for disease incidence due to emissions of particulate matter (PM); IRP : Exposure efficiency of human potential relative to U235; ETP-fw : Ecosystem toxic unit comparative potential - freshwater; HTP-c : Ecosystem toxic unit comparative potential - carcinogenic effects; HTP-nc : Ecosystem toxic unit comparative potential - non-carcinogenic effects; SQP : Soil quality potential index; NR: Not relevant

Note 1: This impact category deals mainly with potential impacts of low doses of ionising radiation on human health from the nuclear fuel cycle. It does not consider effects due to possible nuclear accidents or occupational exposure due to disposal of radioactive waste in underground facilities. Ionising radiation potential of soil, due to radon or some building materials is also not measured by this parameter.

Note 2: The results of this environmental impact indicator should be used with caution, as the uncertainties of the results are high and experience with this parameter is limited.

Use of resources

Indicator	Unit	A1-A3	A4	A5	B1	B2	B3	B4	B5	B6	B7	C1	C2	C3	C4	D
PERE	MJ	48.4	8.6E-01	4.5	0	12.7	0	0	0	0	0	0	3.6E-01	0	3.6E-01	-10.6
PERM	MJ	0	0	0	0	0	0	0	0	0	0	0	0	0	0	0
PERT	MJ	48.4	8.6E-01	4.5	0	12.7	0	0	0	0	0	0	3.6E-01	0	3.6E-01	-10.6
PENRE	MJ	307.0	14.7	19.9	0	3.5	0	0	0	0	0	0	4.9	0	3.1	-5.7
PENRM	MJ	0	0	0	0	0	0	0	0	0	0	0	0	0	0	0
PENRT	MJ	307.0	14.7	19.9	0	3.5	0	0	0	0	0	0	4.9	0	3.1	-5.7
SM	kg	0	0	0	0	0	0	0	0	0	0	0	0	0	0	0
RSF	MJ	0	0	0	0	0	0	0	0	0	0	0	0	0	0	0
NRSF	MJ	0	0	0	0	0	0	0	0	0	0	0	0	0	0	0
FW	m ³	3.7E-02	9.4E-04	5.7E-03	0	4.8E-01	0	0	0	0	0	0	3.9E-04	0	5.8E-04	-3.6E-03

PERE = Use of renewable primary energy excluding renewable primary energy resources used as raw materials; PERM = Use of renewable primary energy resources used as raw materials; PERT = Total use of renewable primary energy resources; PENRE = Use of non-renewable primary energy excluding non-renewable primary energy resources used as raw materials; PENRM = Use of non-renewable primary energy resources used as raw materials; PENRT = Total use of non-renewable primary energy re-sources; SM = Use of secondary material; RSF = Use of renewable secondary fuels; NRSF = Use of non-renewable secondary fuels; FW = Use of net fresh water.

Waste categories

Indicator	Unit	A1-A3	A4	A5	B1	B2	B3	B4	B5	B6	B7	C1	C2	C3	C4	D
HWD	kg	4.1E-03	4.6E-11	1.2E-04	0	1.7E-11	0	0	0	0	0	0	1.5E-11	0	4.8E-08	-7.3E-08
NHWD	kg	4.5	2.1E-03	7.3E-01	0	1.4E-01	0	0	0	0	0	0	7.5E-04	0	14.1	-2.0E-03
RWD	kg	2.6E-03	2.5E-05	4.8E-04	0	4.2E-05	0	0	0	0	0	0	9.2E-06	0	4.2E-05	-6.0E-05

HWD: Hazardous waste disposed of; NHWD: Non-hazardous waste disposed of; RWD: Radioactive waste disposed of; NR: Not relevant

Output flows

Indicator	Unit	A1-A3	A4	A5	B1	B2	B3	B4	B5	B6	B7	C1	C2	C3	C4	D
CRU	kg	0	0	0	0	0	0	0	0	0	0	0	0	0	0	0
MFR	kg	4.26E-02	0	1.4	0	0	0	0	0	0	0	0	0	32.0	0	0
MER	kg	0	0	0	0	0	0	0	0	0	0	0	0	0	0	0
EE	MJ	0	0	0	0	0	0	0	0	0	0	0	0	0	0	0

CRU: Components for reuse; MFR: Materials for recycling; MER: Materials for energy recovery; EE: Energy exported; NR: Not relevant.

References

- [1] General Rules of the GlobalEPD Programme, 2nd revision. AENOR. February 2016.
- [2] EN ISO 14025:2006 Environmental labels. Type III environmental declarations. Principles and procedures (ISO 14025:2006).
- [3] EN 15804:2012+A2:2019 Sustainability in construction. Environmental product declarations. Basic product category rules for construction products.
- [4] ISO 14040:2006. Environmental Management. Life Cycle Assessment. Principles and framework.
- [5] ISO 14044:2006. Environmental Management. Life Cycle Assessment. Requirements and guidelines.
- [6] EN 17160:2019 Product Category Rules for ceramic tiles.
- [7] LCA for experts (Sphera-GaBi) v 10 software-system. SpheraSolutions. Compilation 10.7.1.28. Further information: <https://sphera.com/life-cycle-assessment-lca-software/>
- [8] Managed LCA Content (Sphera databases). SpheraSolutions Upgrade 2023.2 Edition. July 2023. Further information: <https://sphera.com/life-cycle-assessment-lca-database/>
- [9] Life Cycle Assessment Report. Annex I of report C232541; December 2023, version 2 issued by the Institute of Ceramic Technology.

Index

1. General Information.....	3
2. Product information	5
3. LCA information	6
4. System limits, scenarios and additional technical information.....	8
5. Environmental Information.	12
6. Additional environmental impacts.....	16
Annex I. Statement of environmental parameters for the MINIMUM environmental impact format	17
Annex II. Statement of environmental parameters for the MAXIMUM environmental impact format	21

AENOR



Una declaración ambiental verificada

GlobalEPD